



I ENG

# TURNTABLE POSITIONERS

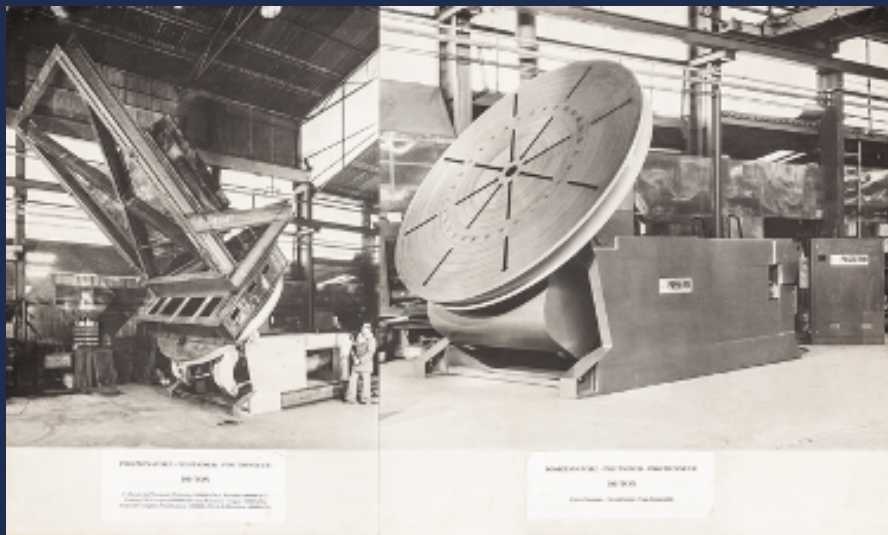
From 3 to 200 Ton  
1, 2 or 3 axes

[carpano.it](http://carpano.it)

# TURNTABLE POSITIONERS

**From 3 to 200 Ton**  
**1, 2 or 3 axes**

This is a very wide range of machines that originated from the Passerini technical department and updated by Carpano from 2011 to 2020. They stand out for their reliability and durability.



In the picture ET100 from the 1970s, 100 ton.



We reserve the right of modifying the technical features of machinery as stated herein and we do not respond for any printing mistake.

**All rights reserved.** Text and images can be reproduced only after our written authorization.

- The updated version is the one in our web site



There are 3 types of turntable positioners covered in this catalog:

### **P series - 2 axes**

Variable speed rotary axis, with AC or brushless motor.  
Tilt axis with half-crown and AC gearmotor driven at fixed speed.

P060 in the picture.



### **PE series - 3 axes**

Variable speed rotary axis, with AC or Brushless motor.  
Tilt axis with half.crown and AC geared motor driven at fixed speed.  
Elevation driven by hydraulic cylinder.

In the picture PE060 in special execution with elevation plinth.



### **ET series - 2 axes**

Variable speed rotary axis, with AC or brushless motor.  
Tilt axis driven by hydraulic cylinder/s.

ET250 in the picture.

# P and PE

## 2 and 3 AXIS, MOTORIZED TILT



### STANDARD FEATURES:

- Rotation driven by AC servo-ventilated motor and vector inverter
- Mechanical tilt at fixed speed
- Hydraulic lift (PE models only)
- Interface to automatic welding machine
- 24V remote control by push button set
- Weld ground 400 to 1200 A
- Feeding 400V 50 Hz

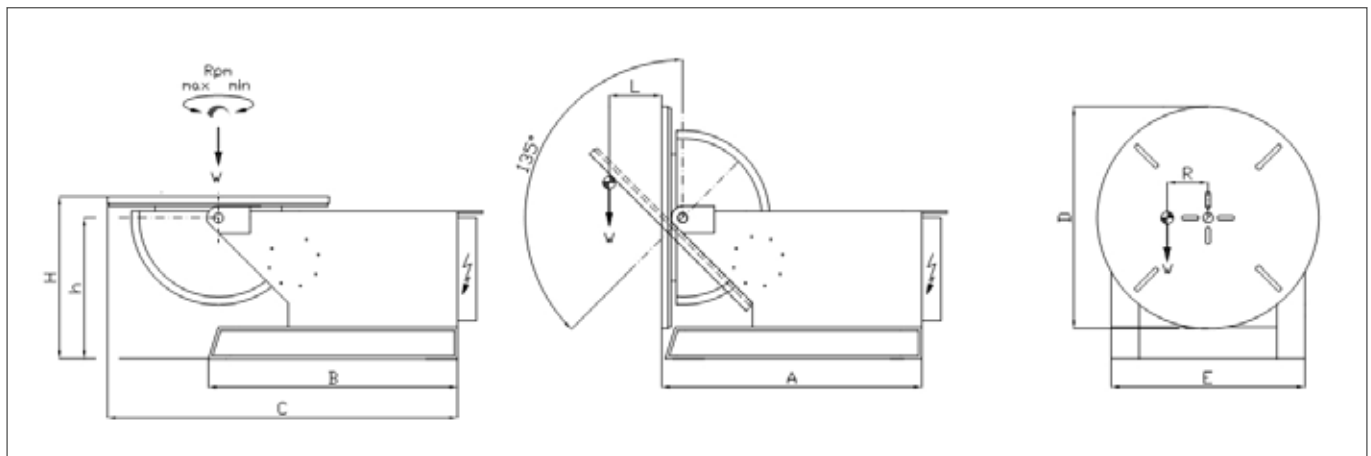
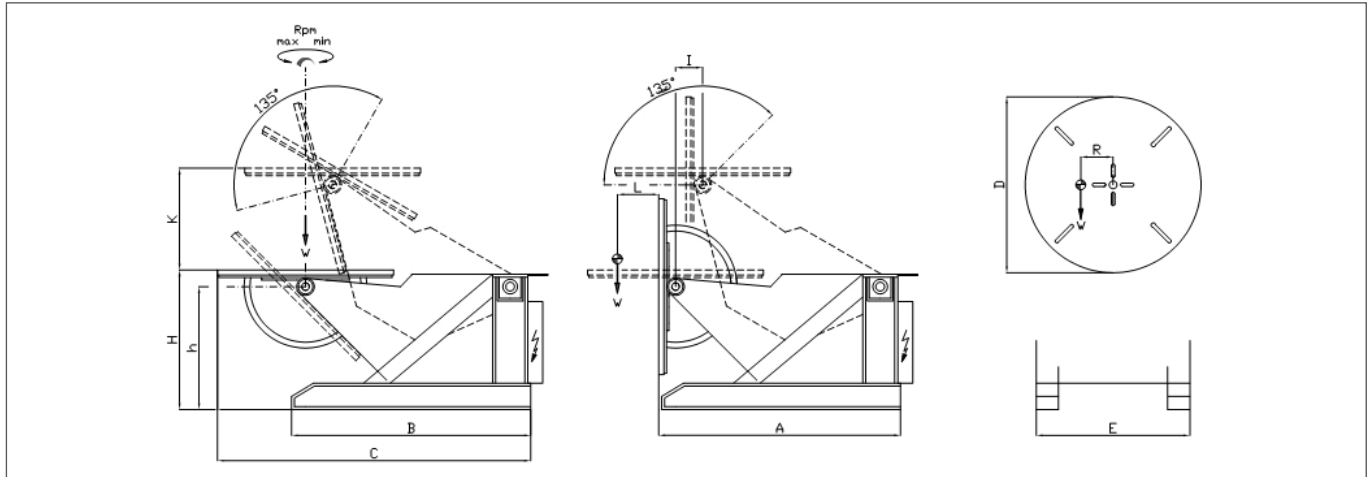


### Optional features:

- Different speed ranges
- Different speed range ratios by brushless motor, with encoder for PLC incorporating one or more axis
- Different feeding
- Start delay, overlapping, etc.
- Self-centring chucks up to Ø 630 mm (see Complementary equipment)
- Digital tachometer

# P and PE

## 2 and 3 AXIS, MOTORIZED TILT



W = Weight capacity Ton  
W x L = Tilt torque Tonxm

W x R = Rotation torque Tonxm  
E1, E2 = Standard speed range min/max rpm

A, B, C, D, h, H, K, I = Dimensions in mm  
P = Machine weight Ton

### POSITIONERS 2-AXIS (AC rotation, Mechanical Tilt 135°)

#### Model P e JODA

Tipo	W	WxL	WxR	E1E	E2E	A	B	C	D	E	h	H	P
P030	3	0,9	0,36	0,08/0,80	0,05/1,00	1144	1290	1630	1200	1070	752	856	1,4
P060	6	2,7	0,5	0,085/0,85	0,065/1,30	1560	1635	2130	1400	1160	890	1020	2,2
P125	12,5	5,5	1,2	0,05/0,50	0,045/0,90	1663	1700	2350	1700	1500	1000	1162	4,1
P250	25	10	1,7	0,03/0,33	0,025 /0,50	2165	2135	2900	1900	1660	1170	1385	5,5
P500	50	18	2,8	0,02/0,22	0,02 /0,40	2370	2350	3235	2200	1900	1350	1585	12

### PPOSITIONERS 3-AXIS (AC rotation, Mechanical Tilt 135° - Hydraulic Lift)

#### Model PE

Tipo	W	WxL	WxR	E1E	E2E	A	B	C	D	E	h	H	K	I	P
PE030	3	0,9	0,36	0,08/0,80	0,05/1,00	1825	1950	2225	1200	1230	855	958	700	190	2,1
PE060	6	2,7	0,5	0,085/0,85	0,065/1,30	2225	2314	2630	1400	1382	1052	1184	900	260	3,5
PE125	12,5	5,5	1,2	0,05/0,50	0,045/0,90	2585	2335	3120	1700	1875	1125	1280	1000	250	6
PE250	25	10	1,7	0,03/0,33	0,025/0,50	3175	3000	3750	1900	2005	1065	1300	1000	235	8

# ET HYDRAULIC TILT



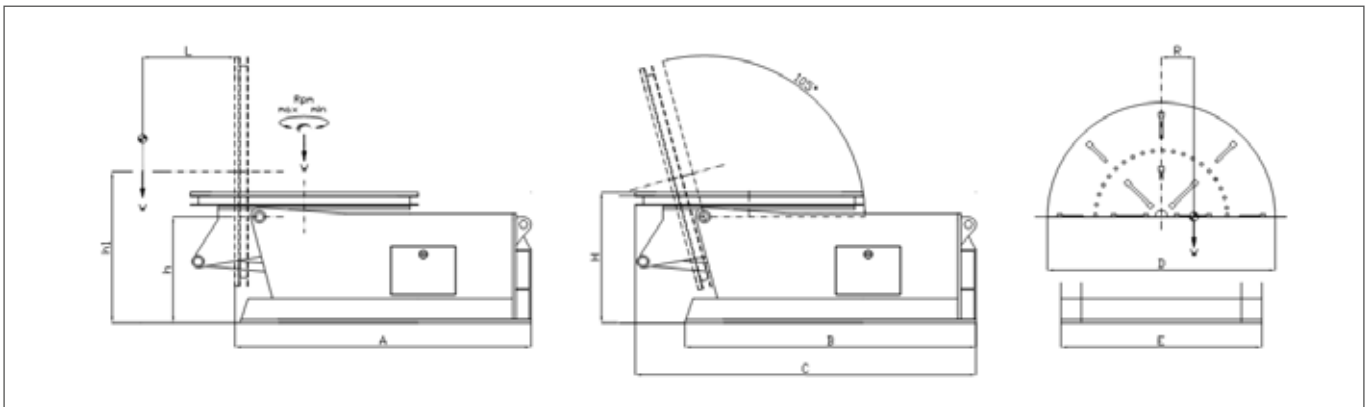
## STANDARD FEATURES:

- Rotation driven by AC and vector inverter.
- Interface to automatic welding machine.
- 24V remote control by push button set.
- Weld ground 800 to 2200 A according to model.
- Feeding 400V 50 Hz.

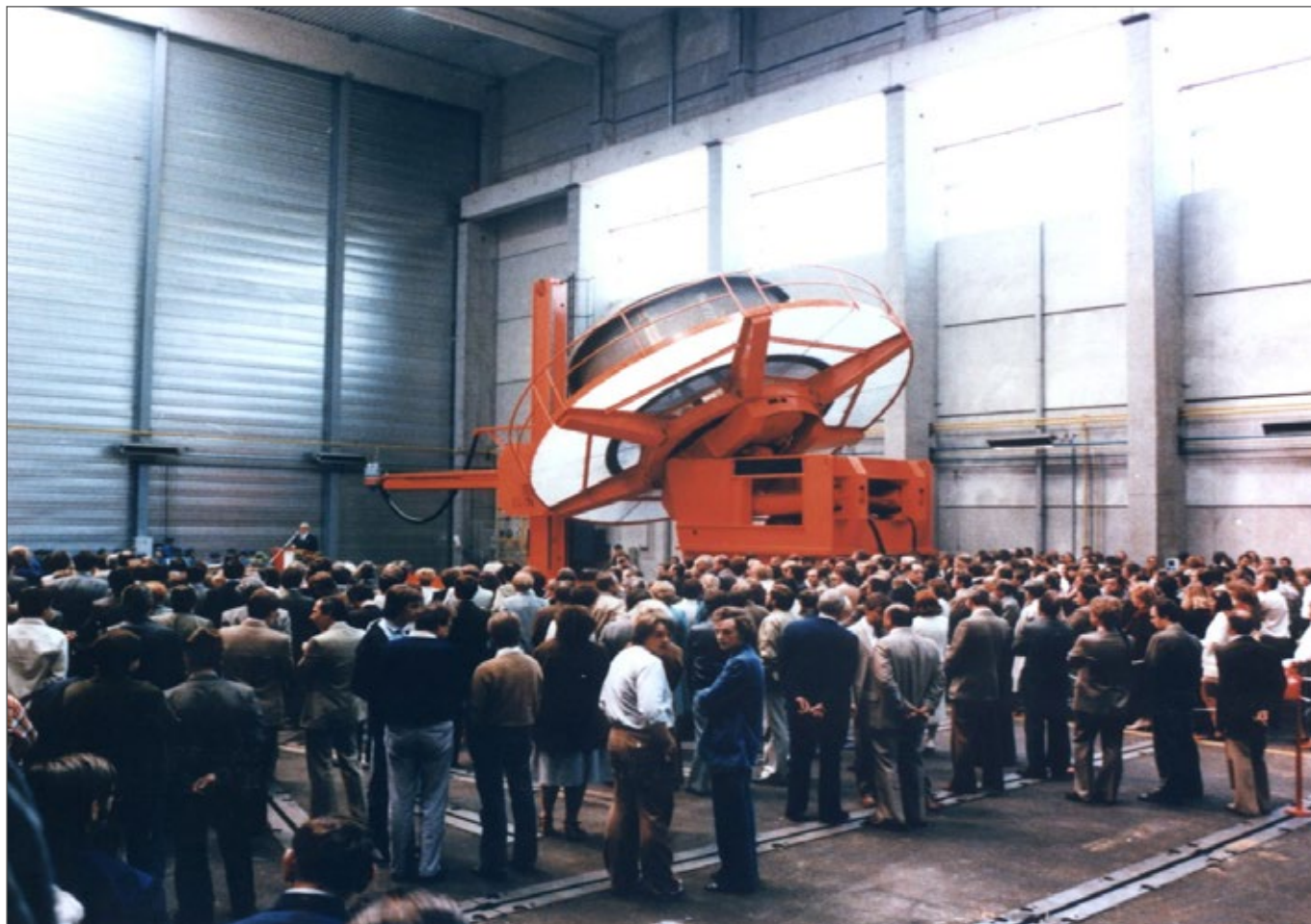


## OPTIONAL FEATURES:

- Different speed ranges.
- Different feeding.
- Digital tachometer.
- Wireless remote control.
- Arms to amplify table  $\varnothing$  up to 8 m.
- Frame without front feet.
- Elevation shelves.



# ET HYDRAULIC TILT



W = Weight capacity Ton  
W x L = Tilt torque Tonxm  
W x R = Rotation torque Tonxm

E1, E2 = Standard speed range min/max rpm  
A, B, C, D, E, h, h1, H = Dimensions in mm  
P = Machine weight Ton

Tilt = 120° or 105° according to model

## POSITIONERS 2-AXIS (AC rotation, Hydraulic Tilt )

### Model ET

Type	W	WxL	WxR	E1	E2	A	B	C	D	E	h	h1	H	P
ET200	20	10	1,7	0,033/0,33	0,025/0,50	2660	2615	2975	2000	1800	1100	1450	1350	6
ET250	25	15	2,8	0,021/0,21	0,020 /0,30	3200	3350	4200	2500	2100	1350	1600	1350	13
ET400	40	30	6	0,021/0,21	0,020 /0,30	3400	3380	4050	2500	2400	1400	1800	1570	19
ET500	50	36	6,5	0,021/0,21	0,020 /0,30	3625	3595	4325	2800	2430	1400	1700	1600	20
ET600	60	45	7,5	0,021/0,21	0,020 /0,30	3625	3595	4325	2800	2470	1450	1800	1600	25
ET800	80	100	12	0,021/0,21	0,020 /0,30	3900	3780	4450	3700	2600	1750	2200	1850	33
ET1000	100	130	16	0,021/0,21	0,020 /0,30	4200	4180	4550	3700	2950	2100	2700	2500	41



**PE250**



**P125**

# JDHE HOLLOW SPINDLE

## JDHE

### HOLLOW SPINDLE Ø 200 OR 260 MM ELEVATING POSITIONER

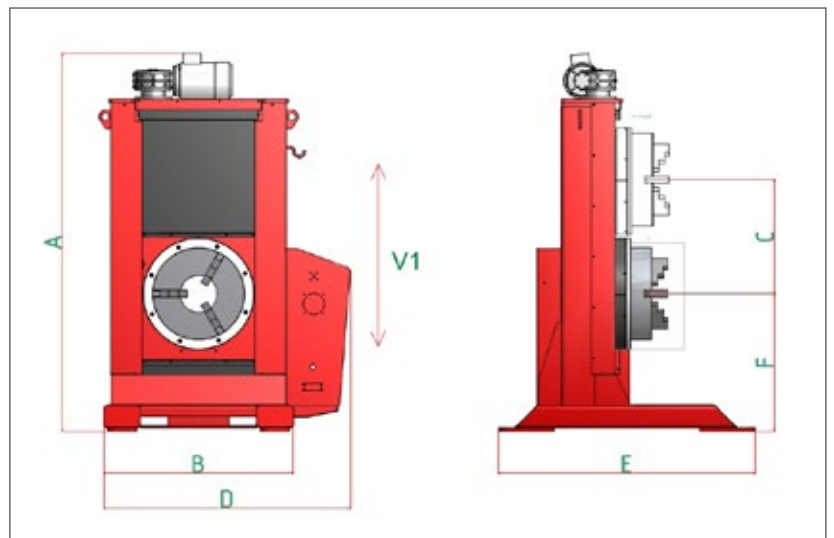
- **JDHE** is a turn & lift table positioner specially designed for handling of pipes with elbows or T branches that can be laid on fixed height dollies as it's the table that moves up and down.
- The hollow spindle (Ø 200 or 260 mm accordingly with the chuck installed) allows introducing the pipe through the rear side as well as observing welding through the inside of the pipe and feeding back-up gas.
- Lift transmission is protected by bellows.



- **W** = Weight capacity
- **W x L** = Tilt torque
- **W x R** = Rotation torque
- **E1** = Speed range min/max rpm (other ranges on demand)

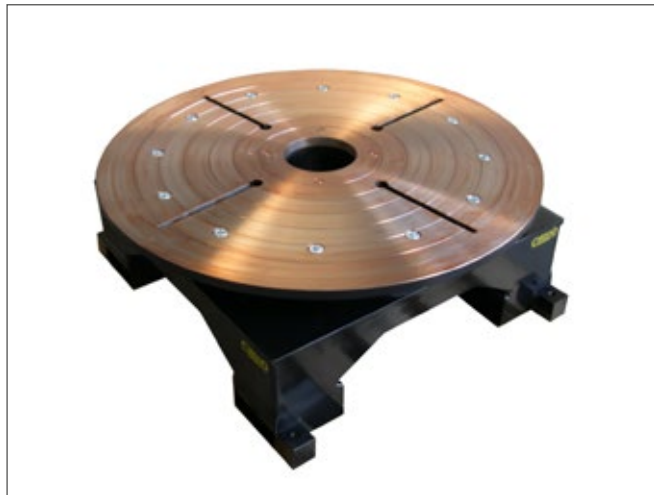


MODEL	u.m.	JDHE1	JDHE2
<b>W</b>	kg	1000	2000
<b>W x L</b>	kgm	300	560
<b>W x R</b>	kgm	100	200
<b>V1</b>	mm/min	560	560
<b>E1</b>	rpm	0,2 – 10	0,05 – 2
<b>A</b>	mm	2055	2830
<b>B</b>	mm	1030	1120
<b>C</b>	mm	600	1000
<b>D</b>	mm	1338	1430
<b>E</b>	mm	1390	1400
<b>F</b>	mm	745	890



# JDPL and AV HORIZONTAL TURNTABLES

JDPL25



JDPL50 incorporating electric cabinet and remote control

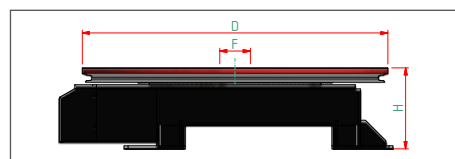


JDPL50 special execution with 6 extension arms  
to Ø 4500 mm covered and connected by steel plate

## STANDARD FEATURES:

- AC drive.
- Interface to automatic welding machine.
- Remote control (24V) by push button set.
- Weld ground 400A to 1200A according to model.
- Protection bellows (AE and FE only).
- Feeding 400V 50Hz (230V only JDPL25).

- **W** = Weight capacity
- **W x L** = Tilt torque
- **W x R** = Rotation torque
- **E1** = Speed range min/max rpm (other ranges on demand)



## HORIZONTAL TURNTABLES

Tipo	W	WxR	E1E	D	F	H	P
JDPL25	2,5	0,15	0,065 /1,0	900	150	362	0,6
JDPL 50	5	0,35	0,065 /1,0	1500	150	400	0,9
JDPL 100	10	0,9	0,085 /1,2	1800	100	426	1,65
JDPL 150	15	0,9	0,065 /1,0	2000	500	426	1,65
AV 200	20	1,2	0,060 /0,9	1700	60	850	3
AV 300	30	1,7	0,033 /0,5	1900	85	880	4,3
AV 400	40	2,3	0,016 /0,25	1900	85	1020	5
AV 600	60	2,8	0,025 /0,40	2200	85	1155	7,5
AV 1000	100	4	0,013 /0,20	2200	85	1385	9
AV 2000	200	6	0,013 /0,20	2500	150	1585	12

## OPTIONAL FEATURES

- Different speed ranges.
- Rotation PLC.
- Different feedings.
- Digital tachometer.
- Weld ground up to 2200A 100%.
- Larger table diameter.
- Extension arms up to 8 m diameter.
- Lower / greater height of table face.
- Rotary distributors for gas, fluid or compressed air through table hollow spindle.



# GENERAL SUPPLY CONDITIONS

## 1. SUPPLY OBLIGATION ARRANGEMENT

The following general terms of business are always to be considered applicable to every order made by the buyer. Therefore, any supply clause written by the buyer on his orders or any other document given to the seller, which may result to be conflicting with the present general conditions, will be considered not written. The buyer has to forward the orders to the seller in writing. The seller reserves the authority to accept telephone and verbal orders. The order is to be considered executed when the buyer receives the written acceptance of the same (order confirmation) by the vendor or, in the absence thereof, automatically 15 days after the order receipt by the seller. All offers and prices are just an indication and are not binding. Therefore the seller considers himself to be bound only to what is declared in his order confirmations.

## 2. TERMS FOR DELIVERY

The delivery dates indicated by the seller as well as the ones written on the buyers' orders have to be considered just as an indication and are not binding and are subject to the punctual supply by the buyer of all the specifics, to the variations due to the availability of the goods with the suppliers or to reasons of force majeure: delays in the delivery due to said availability variations are not attributable to the seller, who is not in duty bound to the compensation for damages suffered by the buyer. Reasons of force majeure have also to be considered the accidents (industrial injury, disease, etc) and any other circumstances which may cause a total or partial job reduction, as well as the lack of raw materials, troubles with transportation, etc. The seller reserves the authority to suspend the delivery of the goods if the buyer has not seen to the payment of the invoices relative to other supplies whose terms of payment are overdue. The goods are understood as being delivered for all intents and purposes to the buyer from the time they were picked up by the carrier or the buyer himself at the seller's warehouse.

## 3. PAYMENT AND TERMS OF PAYMENT

The payments have to be made to the seller's domicile and in accordance with the established conditions. In the event of a delay, the due amounts of money will automatically imply the charge of interests based on the official discount rate plus 5 points. In the event of a non-payment, the buyer is to be considered in default without the necessity of any formal notice by the seller. The presence of possible faults and/or defects in the products does not excuse the buyer for suspending the payment of the invoices. Should the client suspend and/or delay the payments, the seller may suspend the supplies, with the authority to consider the contract automatically terminated by rights and to demand for damages.

## 4. WARRANTY

CARPANO EQUIPMENT guarantees the products for a period of 24 months starting from the delivery date, for a daily work cycle of 8 hours. The warranty is intended ex works CARPANO EQUIPMENT. CARPANO EQUIPMENT guarantees the performance of its products in accordance with the instructions written in the relative manuals. For the products based on job orders, the warranty is pertaining to the specifics agreed with the client.

## 5. VOID WARRANTY

In case of any tampering or unauthorized intervention the warranty shall be deemed void.

## 6. LIABILITY FOR DAMAGE

The seller's liability is limited only to the obligations above and it's expressly agreed that the seller does not accept any liability for damages resulting from any cause connected with the use and utilization of the sold products.

CARPANO EQUIPMENT is not responsible and for no reason whatsoever may the expenses be charged for:

- Machine downtime.
- Direct or in direct damage due to the non-operation of the equipment.
- Working hours spent to solve possible problems on the equipment.

## 7. RESERVATION OF OWNERSHIP

Until the payment in full of any credit resulting from business relations has taken place, included any additional credit and until the payment of bills and cheques has been made, the property in the goods remains in the seller.

## 8. COMPETENT COURT

It's established that the court of Bologna will be the sole competent court for every dispute relative to this contract.

## 9. APPLICABLE LAWS

The applicable law is the Italian law.



## **CARPANO EQUIPMENT Srl**

Via del Legatore, 7 / 40138 Bologna Italy

T. +39 051 6053215 / e-mail: [info@carpano.it](mailto:info@carpano.it)

**carpano.it**