

| ENG

# CHUCKS FOR WELDING PROCESSES

GRIP series  
CHK-ST series

[carpano.it](http://carpano.it)

# CHUCKS FOR WELDING PROCESSES

## GRIP series CHK-ST series

On the following pages you will find a wide range of chucks usually available in stock, to complete your turntable positioners or welding lathes.

We have 2 different series available:

- The CHK-ST series of traditional, precise and sturdy key-locked chucks.
- The Grip series of lightweight chucks with manual lever locks.



We reserve the right of modifying the technical features of machinery as stated herein and we do not respond for any printing mistake.

**All rights reserved.** Text and images can be reproduced only after our written authorization.

- The updated version is the one in our web site

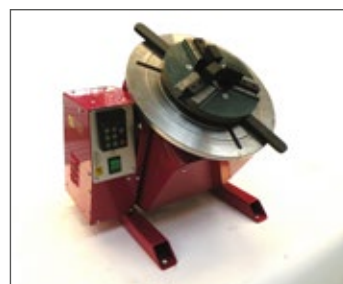


#### GRIP CHUCKS ARE DISTINGUISHED BY:

- Quick manual operation by lever, without the need for the key.
- Low profile and low weight.
- Generous through holes, which make them particularly suitable for tubing.
- Fixing from the top, via 3 120° holes, to avoid the installation of expensive intermediate flanges.



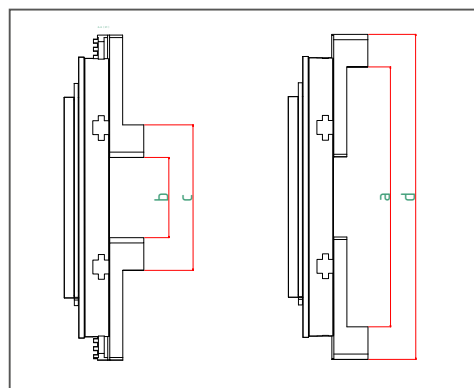
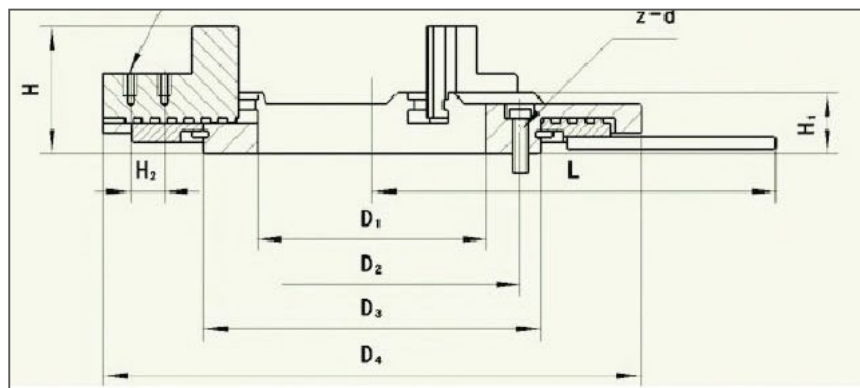
1. LEVERS FOR OPENING OR CLOSING THE JAWS
2. REVERSIBLE DIRECTIONAL JAWS TO OPEN OR CLOSE IN STEEL HARDENED
3. THREADED HOLES ON THE JAWS FOR FASTENING OF SPECIAL JAWS
4. LOW PROFILE
5. THROUGH-HOLE, LARGE COMPARED TO THE DIAMETER OF THE CHUCK
6. FIXING HOLES ON THE TOP AT 120°, AVOID THE INSTALLATION OF FLANGES



**GRIP 200** - installed on ONE

**GRIP 600** - with special extended jaws

## GRIP – Technical data



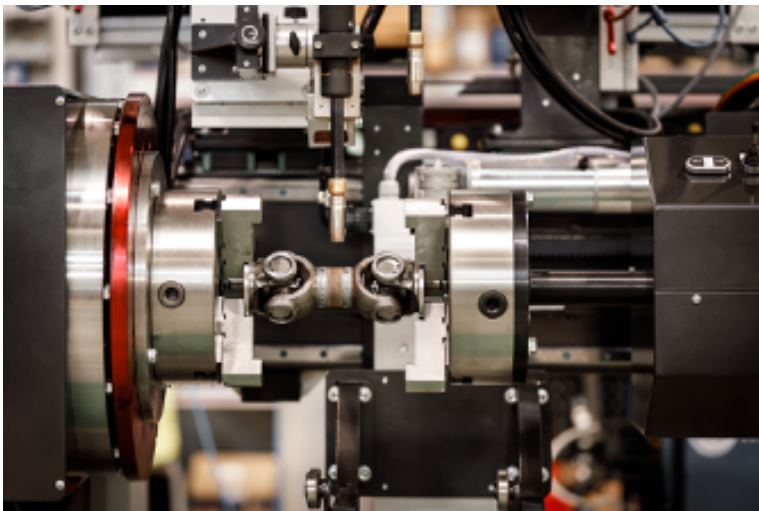
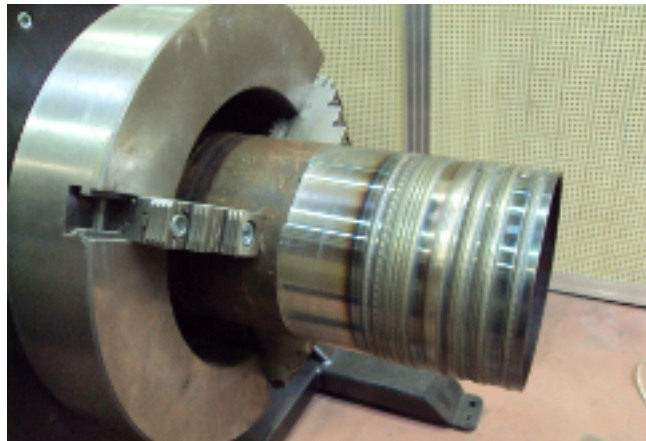
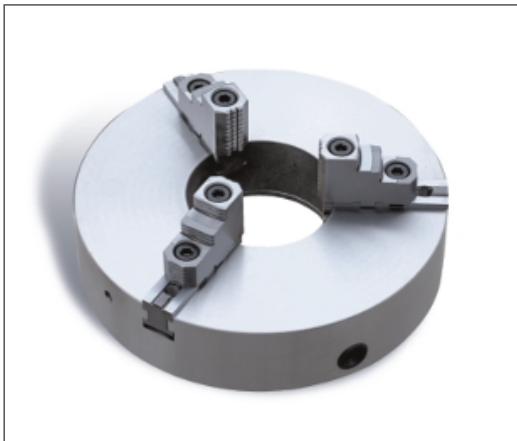
MODEL	GRIP 200	GRIP 300	GRIP 400	GRIP 500	GRIP 600	GRIP 750
D1	80	100	170	240	365	515
D2	100	120	220	280	400	542,5
D3	120	150	250	320	425	570
D4	200	300	400	500	600	750
H	67,5	67,5	95	110	170	170
H1	39	39	45	60	105	105
H2	21	21	25	25	40	40
L	200	240	300	350	425	500
Z-d1	6-M6	6-M6	6-M6	6-M6	6-M12	6-M12
Z-d	3-M8x35	3-M8x30	3-M10x40	3-M12x55	6-M12x110	6-M12x110
Weight Kg	5	12	23	41	78	115

MODEL	GRIP 200	GRIP 300	GRIP 400	GRIP 500	GRIP 600	GRIP 750
Gripping force	110-210	130-300	250-380	360-500	400-620	550-800
Clamping Ø range b	12-130	50-220	120-250	180-360	150-410	380-580
Clamping Ø range c	85-200	120-300	190-380	270-430	290-540	530-730
Clamping Ø range d	175-300	200-370	320-450	430-570	540-750	700-950



**CHK-ST CHUCKS ARE DISTINGUISHED BY:**

- Good centering accuracy
- Hardness of the structure, machined from billet
- Key clamping
- Models from Ø200 have screw-on jaws that can be oriented either inward or outward
- Ø80 or 125 models have 2 sets of jaws for inside and outside.
- As a rule, these chucks need a centering flange as the threaded holes for fixing are underneath the frame.



**CHK-ST-315**

Pair of chucks on Joda midi lathe  
- one chuck attached to the motorized table and one to the tailstock.

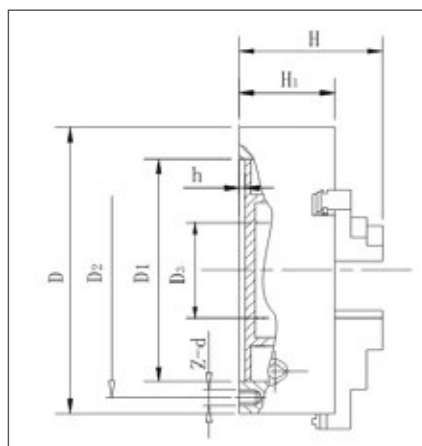
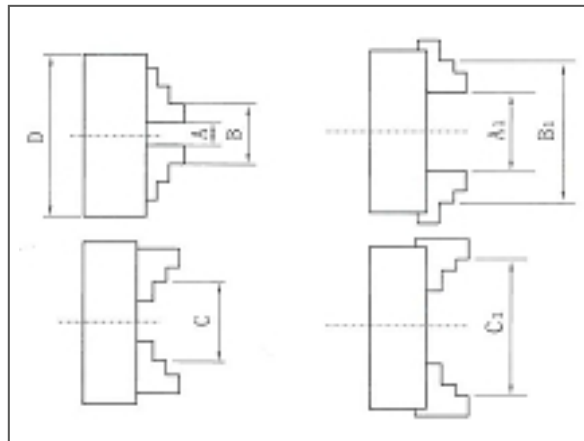
In this case, CHK chucks were chosen for their higher precision and strength of the clamping.

The jaws were custom-made to better adapt to the various formats. This is the advantage of having the jaws screwed on.

# CHK-ST

## SELF-ALIGNING CHUCK

CHUCK Ø	INNER CLAMPING		OUTER CLAMPING
	chuck-on A-A1	chuck-off B-B1	chuck-on C-C1
80	2-22	25-70	22-63
125	2.5-40	38-125	38-110
200	4-85	65-200	65-200
250	6-110	80-250	90-250
315	6-200	75-340	90-380
400	15-210	120-400	120-400
500	25-280	150-500	150-500
630	50-350	170-630	170-630



Also available upon request are the Ø800 and 1000, but they are not usually in stock

CHK-ST	80	125	200	250	315	400	500	630
D	80	125	200	250	315	400	500	630
D1	55	95	165	206	260	340	440	560
D2	66	108	180	226	285	368	465	595
D3	16	30	65	80	100	130	200	260
h	3,5	3,5	5	5	6	6	6	8
Z-d	3-M6	3-M8	3-M10	3-M12	3-M16	3-M16	6-M16	6-M16
H	66	84	109	133	142,5	155,5	203	218
H1	50	58	60	80	90	100	115	130
Weight Kg	4	10	19	25	41	71	118	210





# GENERAL SUPPLY CONDITIONS

## 1. SUPPLY OBLIGATION ARRANGEMENT

The following general terms of business are always to be considered applicable to every order made by the buyer. Therefore, any supply clause written by the buyer on his orders or any other document given to the seller, which may result to be conflicting with the present general conditions, will be considered not written. The buyer has to forward the orders to the seller in writing. The seller reserves the authority to accept telephone and verbal orders. The order is to be considered executed when the buyer receives the written acceptance of the same (order confirmation) by the vendor or, in the absence thereof, automatically 15 days after the order receipt by the seller. All offers and prices are just an indication and are not binding. Therefore the seller considers himself to be bound only to what is declared in his order confirmations.

## 2. TERMS FOR DELIVERY

The delivery dates indicated by the seller as well as the ones written on the buyers' orders have to be considered just as an indication and are not binding and are subject to the punctual supply by the buyer of all the specifics, to the variations due to the availability of the goods with the suppliers or to reasons of force majeure: delays in the delivery due to said availability variations are not attributable to the seller, who is not in duty bound to the compensation for damages suffered by the buyer. Reasons of force majeure have also to be considered the accidents (industrial injury, disease, etc) and any other circumstances which may cause a total or partial job reduction, as well as the lack of raw materials, troubles with transportation, etc. The seller reserves the authority to suspend the delivery of the goods if the buyer has not seen to the payment of the invoices relative to other supplies whose terms of payment are overdue. The goods are understood as being delivered for all intents and purposes to the buyer from the time they were picked up by the carrier or the buyer himself at the seller's warehouse.

## 3. PAYMENT AND TERMS OF PAYMENT

The payments have to be made to the seller's domicile and in accordance with the established conditions. In the event of a delay, the due amounts of money will automatically imply the charge of interests based on the official discount rate plus 5 points. In the event of a non-payment, the buyer is to be considered in default without the necessity of any formal notice by the seller. The presence of possible faults and/or defects in the products does not excuse the buyer for suspending the payment of the invoices. Should the client suspend and/or delay the payments, the seller may suspend the supplies, with the authority to consider the contract automatically terminated by rights and to demand for damages.

## 4. WARRANTY

CARPANO EQUIPMENT guarantees the products for a period of 24 months starting from the delivery date, for a daily work cycle of 8 hours. The warranty is intended ex works CARPANO EQUIPMENT. CARPANO EQUIPMENT guarantees the performance of its products in accordance with the instructions written in the relative manuals. For the products based on job orders, the warranty is pertaining to the specifics agreed with the client.

## 5. VOID WARRANTY

In case of any tampering or unauthorized intervention the warranty shall be deemed void.

## 6. LIABILITY FOR DAMAGE

The seller's liability is limited only to the obligations above and it's expressly agreed that the seller does not accept any liability for damages resulting from any cause connected with the use and utilization of the sold products.

CARPANO EQUIPMENT is not responsible and for no reason whatsoever may the expenses be charged for:

- Machine downtime.
- Direct or in direct damage due to the non-operation of the equipment.
- Working hours spent to solve possible problems on the equipment.

## 7. RESERVATION OF OWNERSHIP

Until the payment in full of any credit resulting from business relations has taken place, included any additional credit and until the payment of bills and cheques has been made, the property in the goods remains in the seller.

## 8. COMPETENT COURT

It's established that the court of Bologna will be the sole competent court for every dispute relative to this contract.

## 9. APPLICABLE LAWS

The applicable law is the Italian law.



## **CARPANO EQUIPMENT Srl**

Via del Legatore, 7 / 40138 Bologna Italy

T. +39 051 6053215 / e-mail: [info@carpano.it](mailto:info@carpano.it)

**carpano.it**